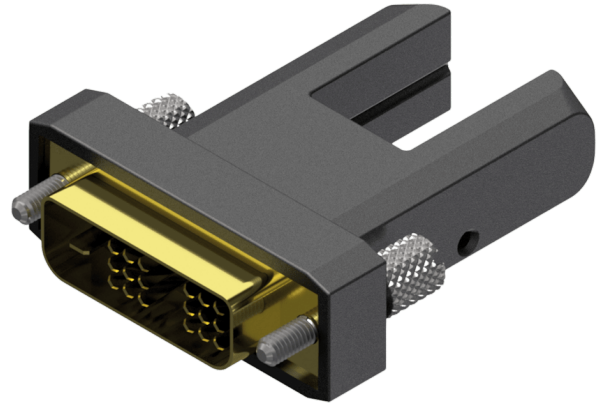


Highlights:

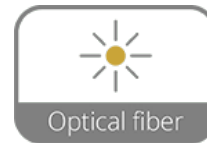
- Fiber optic technology
- Exchangeable connectors

Product information:

The COP140 is an HDMI Micro D female to DVI-D male straight adapter for use with the CLV215A, CLV220A & CLV315A only. This adapter can transform the connection of an HDMI cable to DVI for monitors, projectors or TV's where only a DVI input is available.



Properties:



Product Features:

Application	AV & IT
Series	Classic Series