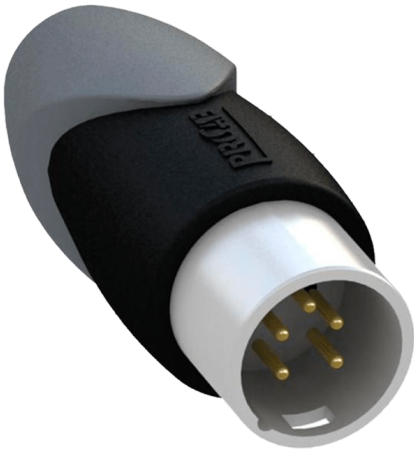


Product information:

The CLP158 is a 110 Ohm DMX terminator, featuring a 5-pin XLR connector. A DMX terminator should be plugged in into the last connected device in the DMX chain, preventing reflections causing data transmission errors on the DMX databus.



Properties:



Product Features:

| | |
|-------------|--------------------|
| Application | AV & IT |
| | Rental & MI |
| Series | Classic Series |
| | Bulk & Accessories |